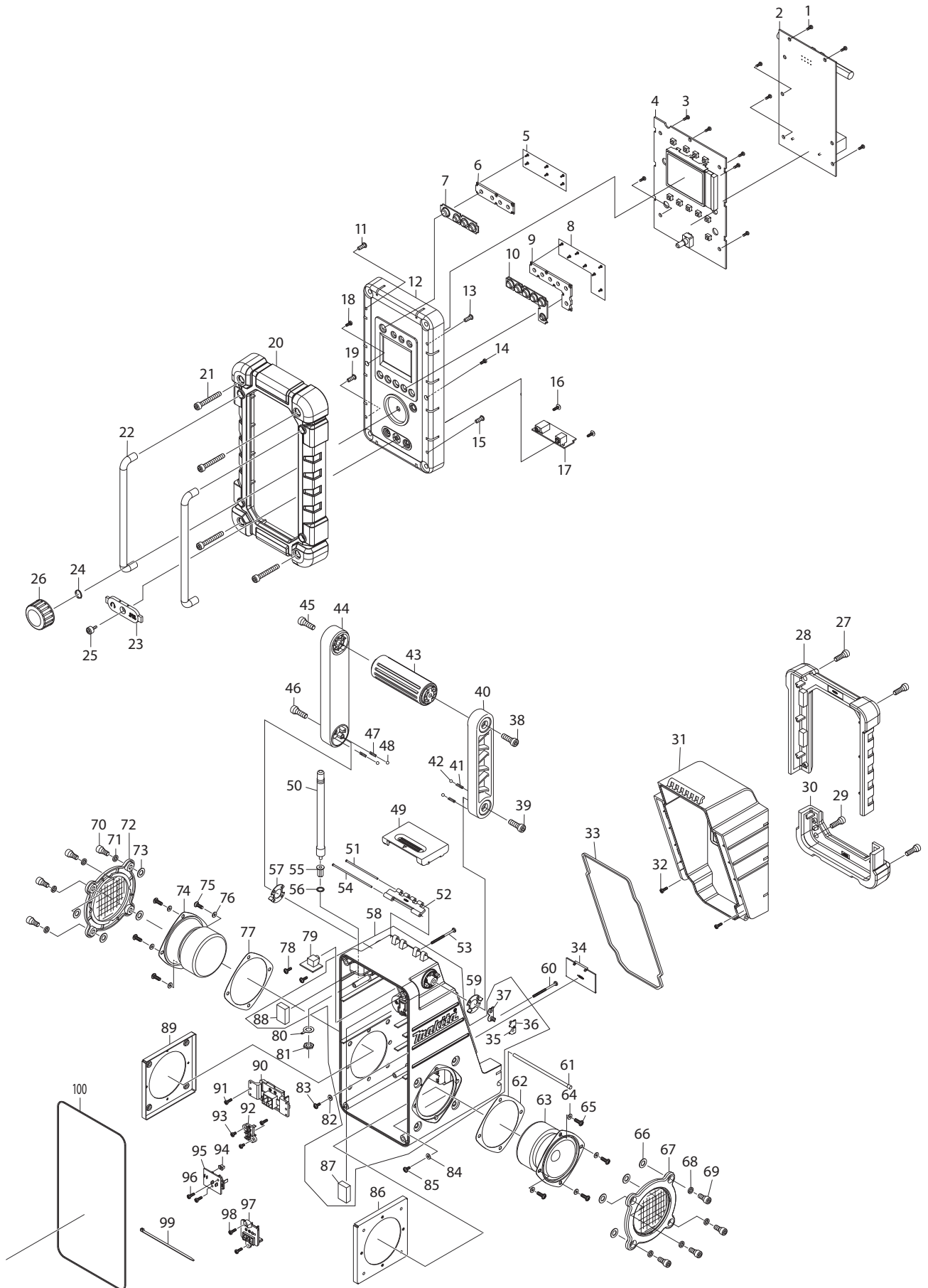




03 - 2016

DMR107

7.2-18V LXT AM/FM Job Site Radio



Item No.	Type Sub	Part No.	Description	Qty	Unit
1		SE00000325	SCREW PTB 3X8(NI)	5	PC.
2		SE00000459	CIRCUIT BOARD A ASSY 05A W02	1	PC.
3		SE00000325	SCREW PTB 3X8(NI)	6	PC.
4		SE00000461	CIRCUIT BOARD C ASSY 07C WA2	1	PC.
5		SE09090011	SCREW 1.7	6	PC.
6		SE020PC020	POWER BUTTON HOLDER	1	PC.
7		SE00000157	POWER BUTTON (GRY)	1	PC.
8		SE09090011	SCREW 1.7	7	PC.
9		SE020PC030	PRESET BUTTON HOLDER	1	PC.
10		SE00000158	PRESET BUTTON (GRY)	1	PC.
11		SE09064161	SCREW M4X16	1	PC.
12		SE00000204	FRONT CABINET ASSY	1	PC.
13		SE09064161	SCREW M4X16	1	PC.
14		SE09163102	SCREW M3X10	1	PC.
15		SE09064161	SCREW M4X16	1	PC.
16		SE00000193	SCREW 3X10	2	PC.
17		SE00000464	PCB-P DC JACK ASSY 07P WA1	1	PC.
18		SE09163102	SCREW M3X10	1	PC.
19		SE09064161	SCREW M4X16	1	PC.
20		SE00000159	FRONT BUMPER	1	PC.
21		SE00000160	SCREW PTHE6X47(CR)	4	PC.
22		SE0338PC5Z	FRONT BAR	2	PC.
23		SE00000042	JACK COVER	1	PC.
24		SE21B1110A	ROTARY KNOB RING	1	PC.
25		SE09173106	HEX SCREW M3X10	1	PC.
26		SE00000465	ROTARY KNOB BLK 3102PC0000040	1	PC.
27		SE09176166	HEX SCREW M6X16	2	PC.
28		SE00000162	BATTERY COVER BUMPER	1	PC.
29		SE09176166	HEX SCREW M6X16	2	PC.
30		SE00000165	REAR BUMPER	1	PC.
31		SE00000166	BATTERY COVER	1	PC.
32		SE00000325	SCREW PTB 3X8(NI)	2	PC.
33		SE00000168	PACKING	1	PC.
34		SE0307PC5Z	BACK UP BATTERY COVER	1	PC.
35		SE00000466	BATTERY CONTACT(+) 2100RA00700	1	PC.
36		SE00000467	BATTERY CONTACT (-)2100PL00200	1	PC.
37		SE021E9030	+/- BATTERY CONTACT ASS'Y	1	PC.
38		SE00000176	SCREW PTHE6X20(CR)	1	PC.
39		SE09176166	HEX SCREW M6X16	1	PC.
40		SE00000177	HANDLE HOLDER(R)	1	PC.
41		SE00000184	SPRING	2	PC.
42		SE09994007	STEEL BALL	2	PC.
43		SE00000179	HANDLE	1	PC.
44		SE00000180	HANDLE HOLDER (L)	1	PC.
45		SE00000176	SCREW PTHE6X20(CR)	1	PC.
46		SE09176166	HEX SCREW M6X16	1	PC.
47		SE00000184	SPRING	2	PC.
48		SE09994007	STEEL BALL	2	PC.
49		SE00000190	BATTERY COVER LOCKER	1	PC.
50		SE00000191	ROD ANT (BLK)	1	PC.
51		SE021PC050	LOCKER FIXER PIN 63.8	1	PC.
52		SE00000067	LOCKER HINGER	1	PC.
53		SE09163452	SCREW M3X45	1	PC.
54		SE021PC040	LOCKER FIXER PIN 79.5	1	PC.
55		SE021J9032	ROD ANT HOLDER	1	PC.
56		SE024J9050	PACKING	1	PC.
57		SE00000192	HANDLE SUS-PLATE(L)	1	PC.
58		SE00000468	REAR CABINET(BLUE)ASSY 01R WA1	1	PC.
59		SE00000187	HANDLE SUS-PLATE (R)	1	PC.
60		SE09163452	SCREW M3X45	1	PC.
61		SE021PC030	BATTERY COVER LOCKER	1	PC.

Item No.	Type	Sub	Part No.	Description	Qty	Unit
62			SE024J9030	PACKING	1	PC.
63			SE01620771	SPEAKER	1	PC.
64			SE024J9070	PACKING	4	PC.
65			SE09090023	SCREW M4X12	4	PC.
66			SE024J9090	PACKING	4	PC.
67			SE00000205	SPEAKER NET ASSY	1	PC.
68			SE024J9040	PACKING	4	PC.
69			SE9076146A	HEX SCREW M6X14	4	PC.
70			SE9076146A	HEX SCREW M6X14	4	PC.
71			SE024J9040	PACKING	4	PC.
72			SE00000205	SPEAKER NET ASSY	1	PC.
73			SE024J9090	PACKING	4	PC.
74			SE01620771	SPEAKER	1	PC.
75			SE09090023	SCREW M4X12	4	PC.
76			SE024J9070	PACKING	4	PC.
77			SE024J9030	PACKING	1	PC.
78			SE00000193	SCREW 3X10	2	PC.
79			SE00000470	PCB F AUX-2 ASS'Y 07FY301	1	PC.
80			SE021PC100	ROD ANT TERMINAL	1	PC.
81			SE021P0020	NUT	1	PC.
82			SE00000199	SILICON RUBBER WASHER	2	PC.
83			SE00000193	SCREW 3X10	2	PC.
84			SE00000199	SILICON RUBBER WASHER	2	PC.
85			SE00000193	SCREW 3X10	1	PC.
86			SE021J9010	SPEAKER HOLDER	1	PC.
87			SE023PC020	EVA 25X18X5.5	1	PC.
88			SE023PC020	EVA 25X18X5.5	1	PC.
89			SE021J9010	SPEAKER HOLDER	1	PC.
90			SE00000416	TERMINAL E (B)	1	PC.
91			SE00000325	SCREW PTB 3X8(NI)	2	PC.
92			SE00000200	TERMINAL C	1	PC.
93			SE00000325	SCREW PTB 3X8(NI)	2	PC.
94			SE00000430	SWITCH KNOB	1	PC.
95			SE00000472	PCB BATTERY SWITCH ASSY07E WA1	1	PC.
96			SE00000325	SCREW PTB 3X8(NI)	2	PC.
97			SE00000473	TERMINAL 10.8V ASSY 011 WA1	1	PC.
98			SE00000325	SCREW PTB 3X8(NI)	2	PC.
99			SE00000195	W/TIES 100MM	1	PC.
100			SE024PC040	PACKING	1	PC.
C01			3A91aW5Z10000	CARTON F/UDMR107	1	PC.

ACCESSORIES

- Visit www.makita.ca for more accessories information -

A01			SE00000077	AC ADAPTER 3A83PCF01B11	1	PC.
A02			-----	7.2V - 18V LI-ION BATTERIES		
A03			-----	CHARGERS		